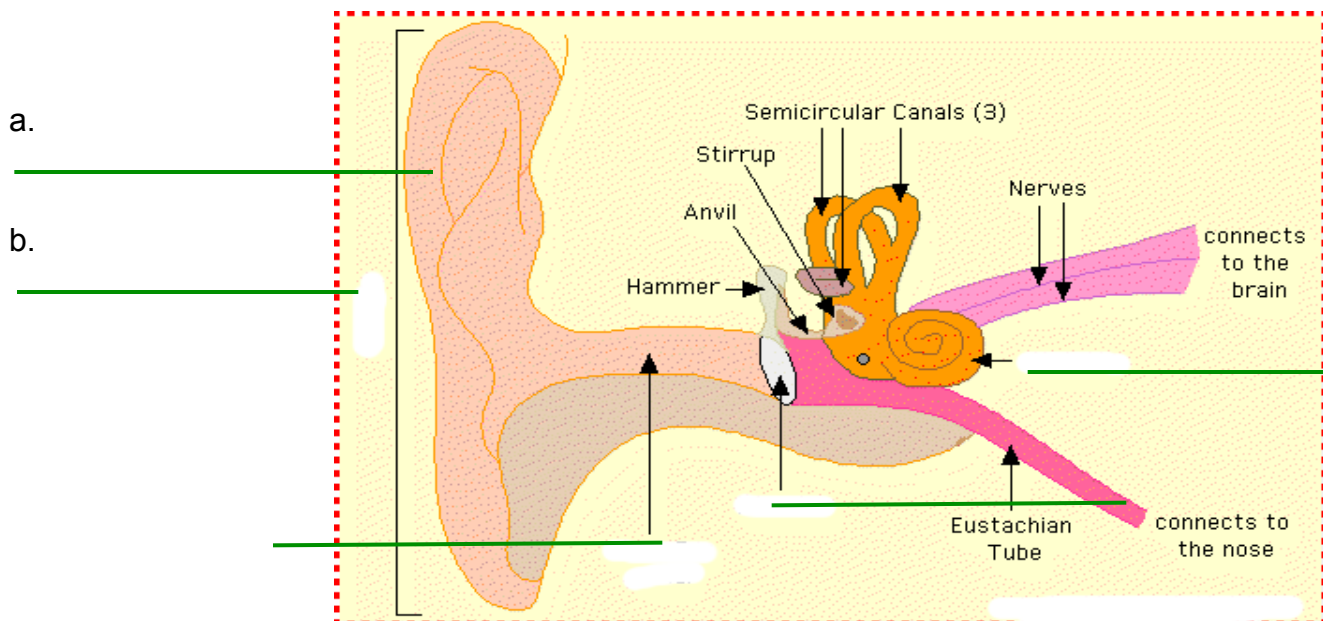


**Parts of the Ear. Match column A with column B.**

- |          |            |    |   |
|----------|------------|----|---|
| _____ 1. | inner ear  | a. | It collects sounds and is at the outer ear area   |
| _____ 2. | pinna      | b. | Made up of the pinna and ear canal.   |
| _____ 3. | eardrum    | c. | It is made up of the ear drum.  |
| _____ 4. | outer ear  | d. | It sends a message to our brain to tell us about the sounds that we hear.   |
| _____ 5. | cochlea    | e. | When sound reaches this part, it shakes or vibrates. It helps sounds reach the inner ear. It also separates outer ear from inner ear. |
| _____ 6. | middle ear | f. | It sends sounds into the middle of the ear.   |
| _____ 7. | ear canal  | g. | It is made up of the cochlea.   |

**Write the name of the part on the green line provided.**



\*Image from EnchantedLearning.com

**Name 3 ways to take care of your ears.**